



RETAIL/RESIDENTIAL INVESTMENT OPPORTUNITY



3-5 Broad Street, Newent

Fully let Retail/Residential investment opportunity in Newent Town Centre with a Rental Income £59,200 pa. The property has been refurbished throughout.

Location

Newent is an expanding country market town with a population of approximately 5,500, situated approximately 10 miles north-west of Gloucester, off the B4215 Gloucester to M50 road which by-passes the town. Junction 3 of the M50 Motorway, which links to Ross-on-Wye and South Wales and to the M5 and national motorway network, is approximately 3 miles to the west of the town.

The property is located in a prominent town centre location on Broad Street, which is the main thoroughfare through the town. There are a range of local amenities provided in the immediate area and the town's main public car park is a short distance away. There is allocated parking to the rear of the property with electric car charger and enclosed garden.

Description

The property is a Grade II Listed building dating from the 17th Century with later additions. It has brick elevations with ashlar render under a tiled roof.

It has recently been refurbished to a high standard throughout and a range of original features have been retained such as exposed beams, original paneling and sash windows. It has been fully re-wired, and a new gas heating system has been installed.

There is a self-contained retail unit in the ground and first floor of No. 3, and a 7-bedroom HMO occupies the remainder of the accommodation.

The HMO accommodation includes 7 fully furnished double bedrooms, 2 with en-suite facilities and separate office/dressing area, a fully fitted kitchen with range of Neff appliances, and separate dining/utility area. There is also a downstairs toilet and family sized bathroom with 3-piece suite with electric shower over the bath. The furniture is brand new, HMO-specific supplied by Fusion Furniture.

The retail unit benefits from a fully glazed frontage and includes ancillary space at first floor level.

Planning

The property has been used for general retail and a single dwelling which fall within Classes E and C3 of the Use Classes Order 1987. An HMO licence is in place for 7 people.

Rates

The Rateable Value listed on the Valuation Office Agency website for the commercial unit is £6,100 and the HMO falls within Band E for Council Tax purposes.

Terms

We are instructed to seek offers in the region of **£620,000** for the freehold interest in the property, subject to the tenancies outlined in the schedule. A purchase at this level would reflect a gross yield of 9.55% or net initial yield of 9.10% after purchaser's costs of 4.81%.

VAT

The property is not elected for VAT.

Legal Costs

Each party to bear their own legal costs incurred in the transaction.





3-5 Broad Street, Newent

Tenancy Schedule

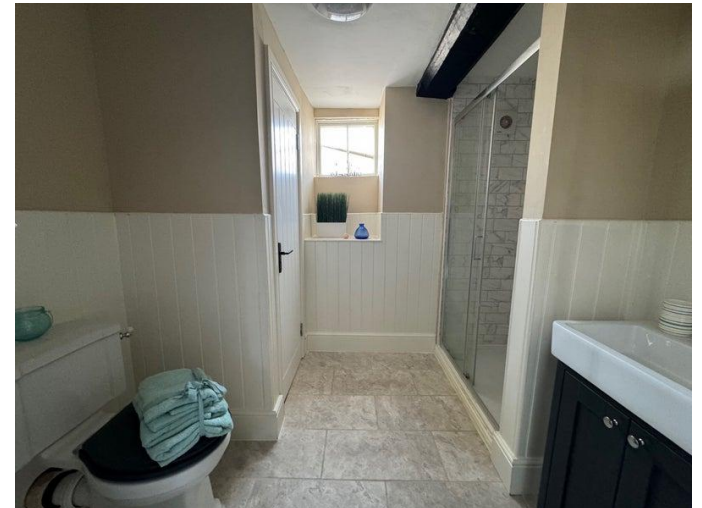
No		Tenant (*)	Terms	Rent	Area	EPC	Rates/ Council Tax
3	Shop	Andrew Bird Hearing Ltd	A new 5-year lease has been agreed.	£10,000 per annum	76.23 m2 (821 ft2)	C-62	£6,100
5	Room 1 (en suite)	Private individual	6-month AST.	£700 per month	293 m2 (3,154 ft2)	D-65	Band E
	Room 2	Private individual	6-month AST.	£550 per month			
	Room 3 (en suite)	Private individual	6-month AST.	£700 per month			
	Room 4	Private individual	6-month AST.	£550 per month			
	Room 5	Private individual	6-month AST.	£500 per month			
	Room 6	Private individual	6-month AST.	£550 per month			
	Room 7	Private individual	6-month AST.	£550 per month			
			TOTAL ANNUAL RENT	£59,200	369.23 m2 (3,975 ft2)		

(*) Ashton & Daniels have been acquired by Andrew Bird Hearing Ltd who were established in 2007 and trade from 17 locations across the region. A new lease has been agreed from 2026 and the rent increases to £11,000 in Year 2 and then £12,000 in Year 4.





3-5 Broad Street, Newent





Request a viewing


For further information or to request a viewing, please get in touch

Key contacts



Simon McKeag BSc (Hons) MRICS

 simon@ashproperty.co.uk

 07737 691453

www.ashproperty.co.uk

ASH is the trading name of ASH & Co CS LLP, registered in England and Wales under the number OC326084
Registered Office: 3 Pullman Court, Great Western Road, Gloucester GL1 3ND VAT No: 484 9406 09 Regulated by RICS

ASH Chartered Surveyors for themselves and for the vendors or lessors of this property for whom they act, give notice that:

1. these particulars are a general outline only, for the guidance of prospective purchasers or tenants, and do not constitute the whole or any part of an offer or contract;

2. ASH Chartered Surveyors cannot guarantee the accuracy of any description, dimensions, references to condition, necessary permissions for use and occupation and other details contained herein and prospective purchasers or tenants must not rely on them as statements of fact or representations and must satisfy themselves as to their accuracy;

3. no employee of ASH Chartered Surveyors has any authority to make or give any representation or warranty or enter into any contract whatever in relation to the property;

4. rents quoted in these particulars may be subject to VAT in addition; (v) ASH Chartered Surveyors will not be liable, in negligence or otherwise, for any loss arising from the use of these particulars; and

5. the reference to any plant, machinery, equipment, services, fixtures or fittings at the property shall not constitute a representation (unless otherwise stated) as to its state or condition or that it is capable of fulfilling its intended function. Prospective purchasers/tenants should satisfy themselves as to the fitness of such items for their requirements.

Code of Practice for Commercial Leases in England and Wales

You should be aware that the Code of practice on commercial leases in England and Wales strongly recommends you seek professional advice from a qualified surveyor, solicitor or licenced conveyancer before agreeing or signing a business tenancy agreement. The Code is available through professional institutions and trade associations.

Money Laundering Regulations 2017

As part of our obligations under the UK Money Laundering Regulations, ASH Chartered Surveyors requires any purchaser or tenant to provide information and documentation to satisfy our legal obligations.

Misrepresentation Act 1967

This marketing brochure is for guidance only and does not form part of any offer or contract and must not be relied upon as statements or representations of fact.

Control of Asbestos Regulations 2012 (CAR 2012)

It is the responsibility of the owner or tenant of the property, and anyone else who has control over it and/or responsibility for maintaining it, to comply with the regulations. The detection of asbestos and asbestos-related compounds is beyond the scope of Alder King and accordingly, we recommend you obtain advice from a specialist source.

