



**OFFICES/DEVELOPMENT OPPORTUNITY**



# 3-7 Rowcroft, Stroud

**Attractive Period properties located in the town centre with generous parking to the rear. Potential for a variety of uses, subject to the necessary consents being obtained.**

## Location

Stroud is a busy Cotswold market town with a population of approximately 38,000 and a catchment area of about 105,000, which lies on the A46 Cheltenham to Bath Road. The town is approximately 10 miles south of Gloucester, 12 miles west of Cirencester and 30 miles north of Bristol. Road communications to the national motorway network are provided at Junction 13 of the M5 approximately 4 miles to the west of the town, and to the M4 via either the A46 or via Cirencester and the newly upgraded A419 road to Swindon. The mainline railway station is a short distance from the town centre, with journeys to London Paddington taking approximately 1½ hours.



The property is situated fronting Rowcroft one of the main town centre streets which crosses under the railway line a short distance from the property and connects with the A419 and A46. Rear access to the property is via the A46 at Merrywalks.

## Description

The property comprises Five adjoining Grade II Listed terraced properties built in the Georgian period of stone construction and resting under pitched slate covered roofs.

The four-storey properties are situated on a sloping site, and the lower ground floor

comprises cellars to the front and lower ground floor rooms with windows to the rear. The property has been extended by way of a number of two storey extensions towards the rear of various forms of construction generally brick, with pitched or flat felt covered roofs.

The properties are fully interconnected on all floors and comprise cellular professional type offices on ground, first and second floors, with storage, toilets and staff accommodation on the basement/lower ground floor.

Internally the properties have generally plastered painted walls and ceilings, single glazed timber framed sash windows and carpeted floors.

## Parking

There is a car park to the rear of the buildings with space to accommodate approximately 20 cars. This is accessed off the A46 via a private drive which is shared with the adjacent properties.

## Planning

Offices which fall within Class E (previously B1) of the Use Classes Order 1987. The property is Grade II Listed and lies within a Conservation Area.





# 3-7 Rowcroft, Stroud

## Accommodation

(Approximate net internal floor areas)

### Lower Ground Floor

Stores, offices, kitchen and staff room

263.5 m2 (2,836 ft2)

### Ground Floor

Reception, meeting rooms, Offices, toilets

280.4 m2 (3,018 ft2)

### First Floor

Offices

212.7 m2 (2,290 ft2)

### Second Floor

Offices, stores and kitchen  
Toilets

183.1 m2 (1,971 ft2)

**TOTAL 939.7 m2 (10,115 ft2)**

The total site area extends to approximately 0.125 hectares (0.309 acres).

## Rates

The Rateable Value listed on the Valuation Office website from 1st April 2026 is £68,000. Prospective occupiers should check with the Local Authority to establish any transitional relief that may be applicable.





# 3-7 Rowcroft, Stroud

## Terms

The property is offered freehold with vacant possession.

The buildings are currently occupied by WSP Solicitors at a rent of £88,000 per annum but they will vacate before completion. Further information is available upon request.

## Price

£1,200,000.

## VAT

The property is not elected for VAT and therefore it will not be applicable on the purchase price.

## EPC

EPC Rating of F-134 valid to December 2035.

## Legal Costs

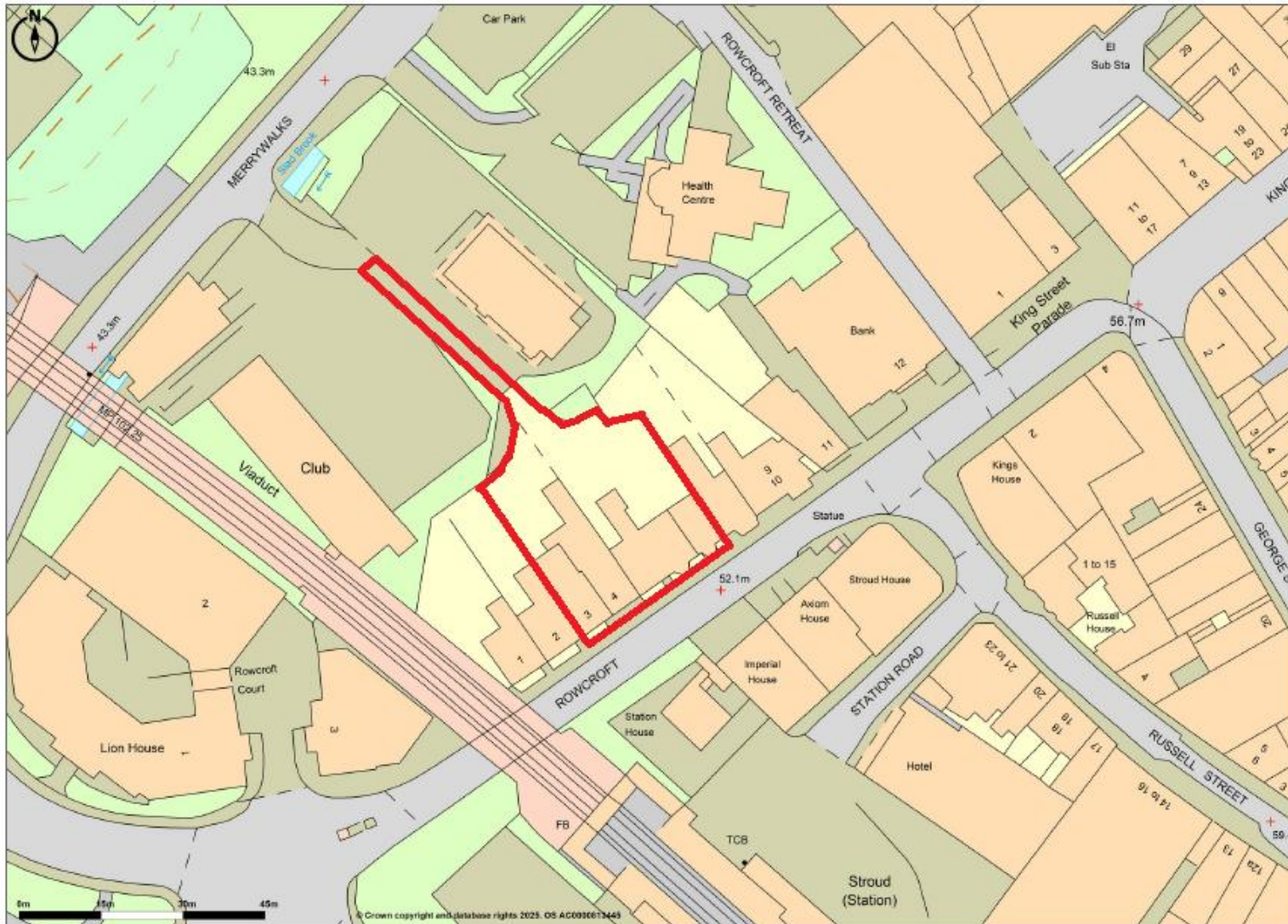
Each party to bear their own legal costs incurred in the transaction.





# 3-7 Rowcroft, Stroud

Site plan –  
for identification  
purposes only



**Promap**  
LANDMARK INFORMATION

© Crown Copyright and database rights 2025. OS AC0000813445  
Plotted Scale - 1:1250. Paper Size - A4





# 3-7 Rowcroft, Stroud





# Request a viewing


For further information or to request a viewing, please get in touch

## Key contacts



**Simon McKeag BSc (Hons) MRICS**

 [simon@ashproperty.co.uk](mailto:simon@ashproperty.co.uk)

 07737 691453

[www.ashproperty.co.uk](http://www.ashproperty.co.uk)

ASH is the trading name of ASH & Co CS LLP, registered in England and Wales under the number OC326084  
Registered Office: 3 Pullman Court, Great Western Road, Gloucester GL1 3ND VAT No: 484 9406 09 Regulated by RICS

**ASH Chartered Surveyors for themselves and for the vendors or lessors of this property for whom they act, give notice that:**

1. these particulars are a general outline only, for the guidance of prospective purchasers or tenants, and do not constitute the whole or any part of an offer or contract;

2. ASH Chartered Surveyors cannot guarantee the accuracy of any description, dimensions, references to condition, necessary permissions for use and occupation and other details contained herein and prospective purchasers or tenants must not rely on them as statements of fact or representations and must satisfy themselves as to their accuracy;

3. no employee of ASH Chartered Surveyors has any authority to make or give any representation or warranty or enter into any contract whatever in relation to the property;

4. rents quoted in these particulars may be subject to VAT in addition; (v) ASH Chartered Surveyors will not be liable, in negligence or otherwise, for any loss arising from the use of these particulars; and

5. the reference to any plant, machinery, equipment, services, fixtures or fittings at the property shall not constitute a representation (unless otherwise stated) as to its state or condition or that it is capable of fulfilling its intended function. Prospective purchasers/tenants should satisfy themselves as to the fitness of such items for their requirements.

### **Code of Practice for Commercial Leases in England and Wales**

You should be aware that the Code of practice on commercial leases in England and Wales strongly recommends you seek professional advice from a qualified surveyor, solicitor or licenced conveyancer before agreeing or signing a business tenancy agreement. The Code is available through professional institutions and trade associations.

### **Money Laundering Regulations 2017**

As part of our obligations under the UK Money Laundering Regulations, ASH Chartered Surveyors requires any purchaser or tenant to provide information and documentation to satisfy our legal obligations.

### **Misrepresentation Act 1967**

This marketing brochure is for guidance only and does not form part of any offer or contract and must not be relied upon as statements or representations of fact.

### **Control of Asbestos Regulations 2012 (CAR 2012)**

It is the responsibility of the owner or tenant of the property, and anyone else who has control over it and/or responsibility for maintaining it, to comply with the regulations. The detection of asbestos and asbestos-related compounds is beyond the scope of Alder King and accordingly, we recommend you obtain advice from a specialist source.

