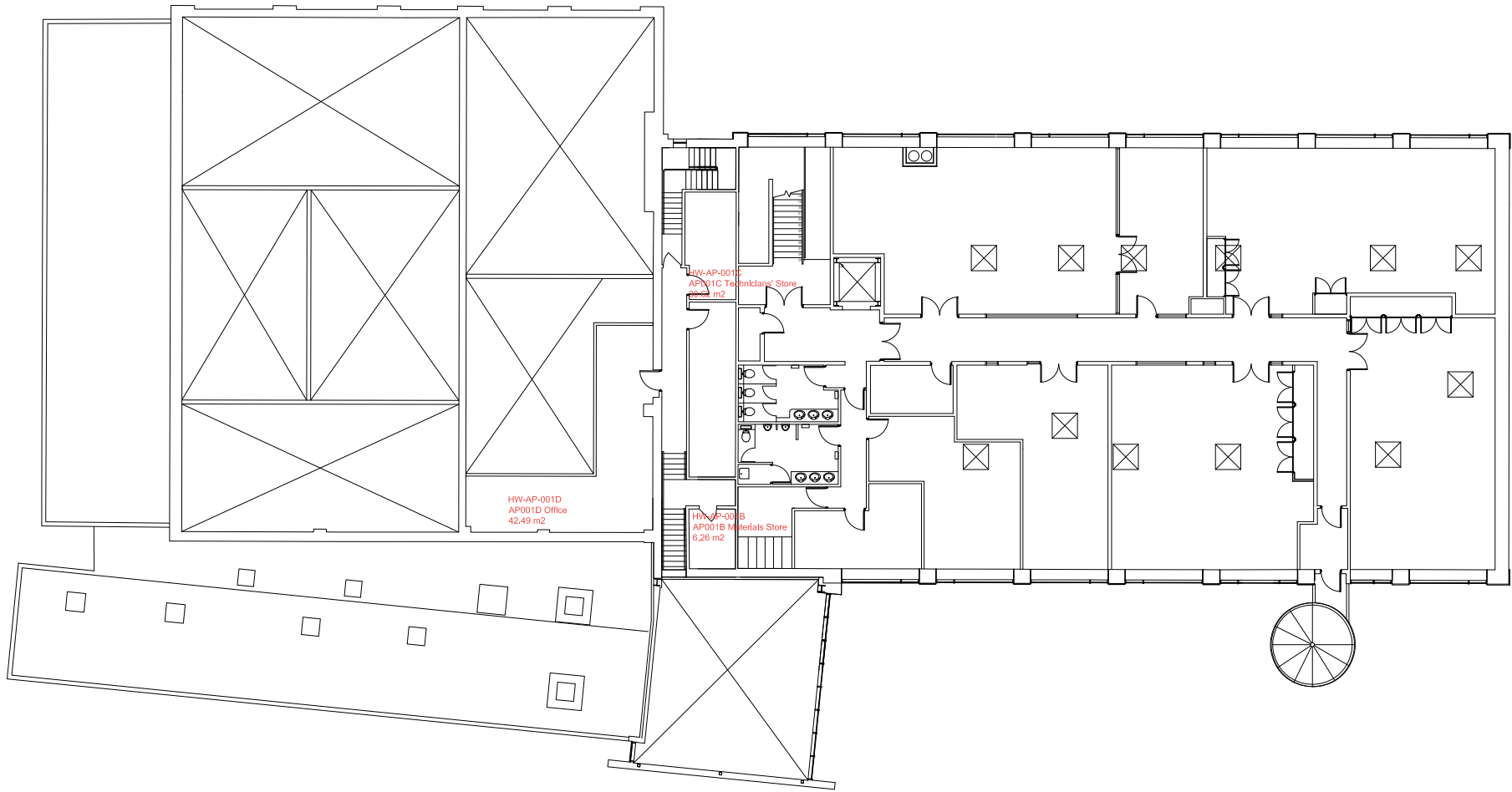


Gross External Area
135.55 m2

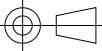
Gross Internal Area
116.99 m2



0m 5m 10m



3rd Angle Projection U.N.O.



Do not scale this print.

Notes

Rev	Comment	By	Date
-----	---------	----	------

 UNIVERSITY OF
GLOUCESTERSHIRE

Dunholme Villa
The Park Campus
The Park
Cheltenham
GL50 2RH
t: 01242 714888

Drawing Status
As Built

Campus Location
**Hardwick
Cheltenham**

Drawing Title
**Centre for Art & Photography
Mezzanine Floor
Floor Plan**

Scale	Drawn	Check	Rev.
1:300 @ A3	SLRW		01

Date
17-11-2021

Drawing Number
HW-AP-00.5-FP