

Suite 2 Fullers Court, 40 Lower Quay Street,
Gloucester GL1 2LW.

- Offices
- Gloucester
- To Let
- 81.02 m2 (872 ft2)





Suite 2 Fullers Court

Open plan office suite with allocated parking in close proximity to the City Centre and Gloucester Docks.

Location

Gloucester is located approximately 9 miles (14.5 km) west of Cheltenham, 35 miles (56.2 km) north of Bristol, 55 miles (88.5 km) south of Birmingham and 100 miles (161 km) west of London. Access to the motorway network is available at Junctions 11, 11A and 12 of the M5 and Junction 15 of the M4 at Swindon. The link to the M4 is via the A417/A419 trunk road.

The property is located in Lower Quay Street at the lower end of Westgate Street in an area of mixed commercial and residential use.

Description

The office suite includes suspended ceiling with Category II lighting, perimeter trunking, night storage heaters, and carpeting throughout. The suite benefits from allocated parking and there is a shared kitchen and WC facilities.

Accommodation

(Approximate net internal area)

Office Suite 2	81.02 sq m	(872 sq ft)
----------------	------------	-------------

Rates

The entry currently listed on the Valuation Office Agency website is £7,300. Prospective occupiers should check with the Local Authority to establish any transitional relief that may be applicable.

Planning

Offices which fall within Class B1 of the Use classes Order 1987. It may suit alternative uses subject to the necessary consent being obtained.

Terms

The suite is offered by way of a new lease for a term to be agreed.

Service Charge

A charge is levied by the Landlord to cover the costs associated with the upkeep and maintenance of the common areas.

Rent

Based on £8.00 per square foot per annum exclusive.

VAT

The property is elected for VAT.

Energy Performance Certificate

The EPC Rating for the Suite is E-104.

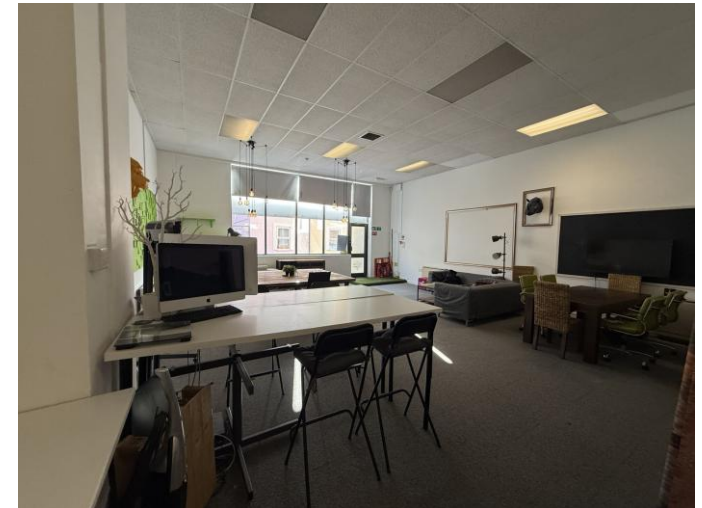
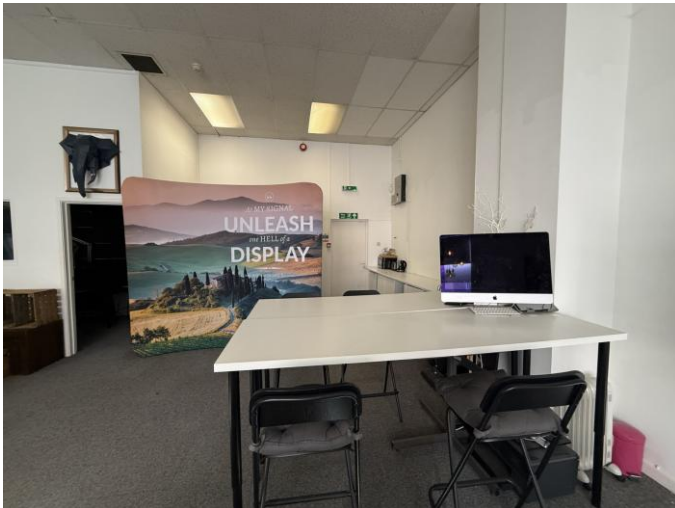
Legal Costs

Each party to bear their own legal costs incurred in the transaction.





Suite 2, Fullers Court





Request a viewing

For further information or to request a viewing, please get in touch

Key contacts

Simon McKeag BSc (Hons) MRICS



simon@ashproperty.co.uk



07737 691453

Ollie Hambling



ollie@ashproperty.co.uk



01452 300433

www.ashproperty.co.uk

ASH is the trading name of ASH & Co CS LLP, registered in England and Wales under the number OC326084
Registered Office: 3 Pullman Court, Great Western Road, Gloucester GL1 3ND VAT No: 484 9406 09 Regulated by RICS

ASH Chartered Surveyors for themselves and for the vendors or lessors of this property for whom they act, give notice that:

1. these particulars are a general outline only, for the guidance of prospective purchasers or tenants, and do not constitute the whole or any part of an offer or contract;

2. ASH Chartered Surveyors cannot guarantee the accuracy of any description, dimensions, references to condition, necessary permissions for use and occupation and other details contained herein and prospective purchasers or tenants must not rely on them as statements of fact or representations and must satisfy themselves as to their accuracy;

3. no employee of ASH Chartered Surveyors has any authority to make or give any representation or warranty or enter into any contract whatever in relation to the property;

4. rents quoted in these particulars may be subject to VAT in addition; (v) ASH Chartered Surveyors will not be liable, in negligence or otherwise, for any loss arising from the use of these particulars; and

5. the reference to any plant, machinery, equipment, services, fixtures or fittings at the property shall not constitute a representation (unless otherwise stated) as to its state or condition or that it is capable of fulfilling its intended function. Prospective purchasers/tenants should satisfy themselves as to the fitness of such items for their requirements.

Code of Practice for Commercial Leases in England and Wales

You should be aware that the Code of practice on commercial leases in England and Wales strongly recommends you seek professional advice from a qualified surveyor, solicitor or licenced conveyancer before agreeing or signing a business tenancy agreement. The Code is available through professional institutions and trade associations.

Money Laundering Regulations 2017

As part of our obligations under the UK Money Laundering Regulations, Alder King LLP requires any purchaser or tenant to provide information and documentation to satisfy our legal obligations.

Misrepresentation Act 1967

This marketing brochure is for guidance only and does not form part of any offer or contract and must not be relied upon as statements or representations of fact.

Control of Asbestos Regulations 2012 (CAR 2012)

It is the responsibility of the owner or tenant of the property, and anyone else who has control over it and/or responsibility for maintaining it, to comply with the regulations. The detection of asbestos and asbestos-related compounds is beyond the scope of Alder King and accordingly, we recommend you obtain advice from a specialist source.

