

Pallas Villa, The Park, Cheltenham GL50 2RQ.

- 🏢 Offices/Development Opportunity
- 📍 Cheltenham
- 🏠 For Sale
- 📏 538.24 m2 (5,795 ft2)



On the instructions of University of Gloucestershire



Pallas Villa, The Park, Cheltenham

Substantial Period Building in a prime residential area with potential for a variety of uses, subject to planning. Available freehold with vacant possession.

Location

The Regency Spa town of Cheltenham, which supports a district population of approximately 115,000, is one of Gloucestershire's principal commercial and administrative centres with major occupiers including Zurich, Capita, GCHQ, GE Aviation, Super Dry Group and Spirax Sarco.

The town benefits from good local and regional road communications via the M5 (Junctions 10 and 11). In addition, the A417/A419 northeast link provides access to the M4 (Junction 15) at Swindon.

The town is approximately 9 miles (14.5 km) east of Gloucester, 25 miles (40 km) south of Worcester, 42 miles (67.5 km) northeast of Bristol and 100 miles (161 km) northwest of London.

The property is located adjacent to the Gloucestershire University Park campus in The Park approximately ½ a mile south from the town centre and ¼ of a mile west from A46 Bath Road.

Description

Pallas Villa is a substantial, four storey (including basement) Grade II Listed building dating from the mid 19th Century of stucco over brick construction under a hipped slate roof. The property has been renovated to a modern standard; however, it has retained many typical period features including the layout, staircase, ornate coving.

Internally, the accommodation includes a ground floor entrance hall off which are located office with three former lecture rooms, a conservatory, storeroom, kitchenette and WC. Stairs lead to the upper and lower ground floors where further lecture rooms, kitchen and WC facilities are provided. The lower ground floor has a separate access from the side.

In general, the rooms are finished with carpet floor coverings, emulsion painted plaster walls and ceilings with wall mounted radiators served by a gas fired central heating boiler. Lighting provided by fluorescent/LED lighting and there are wall mounted computer, electricity and telephone points.

There is a tarmacadum surfaced car park to the front of the property and the rear garden is laid to lawn with mature trees and shrubs and brick walls, wooden fence and hedging to boundaries.

Accommodation

Approximate net internal areas

Ground Floor	145.49 m2	(1,537 ft2)
First Floor	127.95 m2	(1,376 ft2)
Second Floor	140.44 m2	(1,512 ft2)
Lower Ground Floor	124.36 m2	(1,339 ft2)

Total 538.24 m2 (5,795 ft2)

The total gross internal area extends to approx. 754.52 m2 (8,122 ft2).

The total site area extends to approximately 0.15 hectares (0.38 acre).

Planning

The property has been used for education purposes which falls within Class F1 of the Use Classes Order 1987. The property is Grade II Listed and lies in a Conservation Area.

Business Rates

The property will need to be reassessed for rating purposes.





Pallas Villa, The Park, Cheltenham

Terms

The property is offered freehold with vacant possession. The proposed demise edged red on the attached plan is to be sold with the property and the Purchaser to arrange for a fence/wall to be erected around the open boundaries following completion. The specification to be approved by the Vendor.

On the instructions of University of Gloucestershire, we are instructed to invite final and best offers by 12pm on Friday 3rd October 2025.

Consideration will be given to conditional and unconditional offers.

Guide Price

Offers are invited in the region of £2,000,000.

VAT

The property is not elected for VAT.

Energy Performance Certificate

The property has an EPC Rating of D-93.

Legal Costs

Each party to bear their own costs incurred in the transaction.





Pallas Villa, The Park, Cheltenham



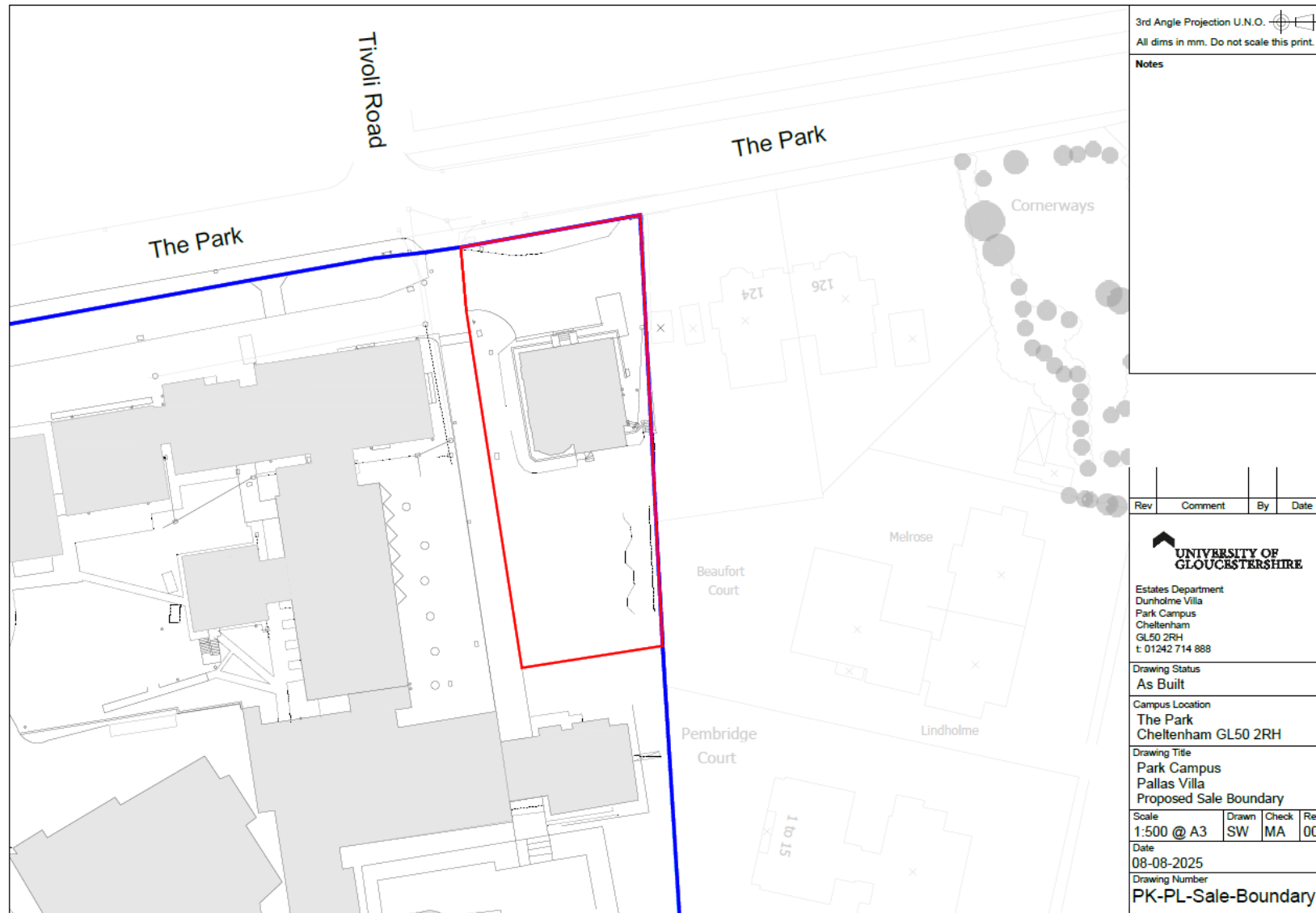


Pallas Villa, The Park, Cheltenham





Pallas Villa, The Park, Cheltenham



Proposed demise - not to scale






Request a viewing

For further information or to request a viewing, please get in touch

Key contacts

Simon McKeag BSc (Hons) MRICS

 simon@ashproperty.co.uk

 07737 691453

Ollie Hambling

 ollie@ashproperty.co.uk

 01452 300433

We are proposing to carry out set viewing days - please contact us for days and times.

www.ashproperty.co.uk

ASH is the trading name of ASH & Co CS LLP, registered in England and Wales under the number OC326084
Registered Office: 3 Pullman Court, Great Western Road, Gloucester GL1 3ND VAT No: 484 9406 09 Regulated by RICS

ASH Chartered Surveyors for themselves and for the vendors or lessors of this property for whom they act, give notice that:

1. these particulars are a general outline only, for the guidance of prospective purchasers or tenants, and do not constitute the whole or any part of an offer or contract;

2. ASH Chartered Surveyors cannot guarantee the accuracy of any description, dimensions, references to condition, necessary permissions for use and occupation and other details contained herein and prospective purchasers or tenants must not rely on them as statements of fact or representations and must satisfy themselves as to their accuracy;

3. no employee of ASH Chartered Surveyors has any authority to make or give any representation or warranty or enter into any contract whatever in relation to the property;

4. rents quoted in these particulars may be subject to VAT in addition; (v) ASH Chartered Surveyors will not be liable, in negligence or otherwise, for any loss arising from the use of these particulars; and

5. the reference to any plant, machinery, equipment, services, fixtures or fittings at the property shall not constitute a representation (unless otherwise stated) as to its state or condition or that it is capable of fulfilling its intended function. Prospective purchasers/tenants should satisfy themselves as to the fitness of such items for their requirements.

Code of Practice for Commercial Leases in England and Wales

You should be aware that the Code of practice on commercial leases in England and Wales strongly recommends you seek professional advice from a qualified surveyor, solicitor or licenced conveyancer before agreeing or signing a business tenancy agreement. The Code is available through professional institutions and trade associations.

Money Laundering Regulations 2017

We are required by HMRC to conduct anti-money laundering checks on all parties with an interest in the property and accordingly we will require forms of identification in due course.

Misrepresentation Act 1967

This marketing brochure is for guidance only and does not form part of any offer or contract and must not be relied upon as statements or representations of fact.

Control of Asbestos Regulations 2012 (CAR 2012)

It is the responsibility of the owner or tenant of the property, and anyone else who has control over it and/or responsibility for maintaining it, to comply with the regulations. The detection of asbestos and asbestos-related compounds is beyond the scope of ASH Chartered Surveyors and accordingly, we recommend you obtain advice from a specialist source.

