





Unit 2 Stanley Court, Waterwells Business Park

Opportunity to purchase a Modern industrial unit on a popular Business Park within 1.5 miles of Junction 12 of the M5.

Location

Stanley Court is located within the north-eastern sector of the popular Waterwells Business Park and comprises a number of modern industrial warehouse units. The park is situated directly off the A38 dual carriageway being one of the principal arterial routes of the City. Road communications are excellent, with Junction 12 of the M5 motorway approximately 1 mile south, providing access to Birmingham and the north, and Bristol and the south. Stanley Court is located approximately 4 miles from Gloucester city centre, and 12 miles from Cheltenham.

Description

Unit 2 is a modern industrial/warehouse unit of steel portal frame construction with profile metal cladding. The accommodation comprises a store/workshop, a kitchen and WC facilities on the ground floor with offices at mezzanine level.

The offices are finished to a good specification and include electric water heater and electric heating, a combination of carpet and tiled flooring, suspended ceilings with inset lighting and networking have been installed.

The property has two allocated parking spaces to the front and opposite the building and an area for loading/unloading.

Accommodation

(Approximate gross internal areas)

Ground Floor	69.82 m2	(752 ft2)
First Floor	53.04 m2	(571 ft2)
Total	122.86 m2	(1,323 ft2)

Planning

Within Classes E and B8 of the Use Classes Order 1987.

Rates

The Rateable Value on the Valuation Office Agency website is £9,400. Prospective occupiers should check with the Local Authority to establish any transitional relief that may be applicable.

EPC

The property has a Rating of C-72.

Terms

The property is offered freehold with vacant possession.

Price

£180,000.

Service Charge

A charge is levied by the Estate Landlord to cover the costs associated with the upkeep and maintenance of the common areas.

VAT

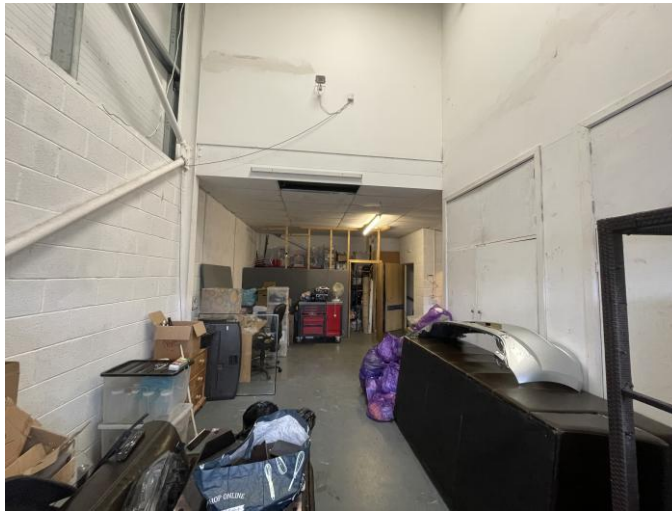
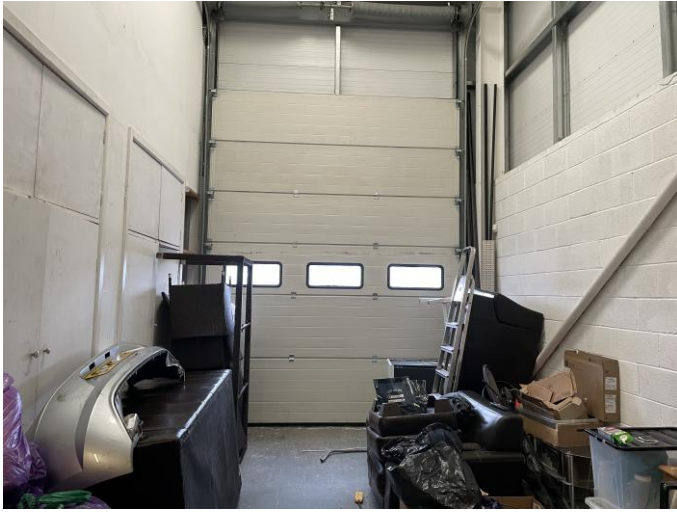
The property is elected for VAT.

Legal Costs

Each party to bear their own legal costs incurred in the transaction.



Unit 2 Stanley Court, Waterwells Business Park





Request a viewing

For further information or to request a viewing, please get in touch

Key Contact



Simon McKeag BSc (Hons) MRICS



simon@ashproperty.co.uk



07737 691453

www.ashproperty.co.uk

ASH is the trading name of ASH & Co CS LLP, registered in England and Wales under the number OC326084
Registered Office: 3 Pullman Court, Great Western Road, Gloucester GL1 3ND VAT No: 484 9406 09 Regulated by RICS

ASH Chartered Surveyors for themselves and for the vendors or lessors of this property for whom they act, give notice that:

1. these particulars are a general outline only, for the guidance of prospective purchasers or tenants, and do not constitute the whole or any part of an offer or contract;

2. ASH Chartered Surveyors cannot guarantee the accuracy of any description, dimensions, references to condition, necessary permissions for use and occupation and other details contained herein and prospective purchasers or tenants must not rely on them as statements of fact or representations and must satisfy themselves as to their accuracy;

3. no employee of ASH Chartered Surveyors has any authority to make or give any representation or warranty or enter into any contract whatever in relation to the property;

4. rents quoted in these particulars may be subject to VAT in addition; (v) ASH Chartered Surveyors will not be liable, in negligence or otherwise, for any loss arising from the use of these particulars; and

5. the reference to any plant, machinery, equipment, services, fixtures or fittings at the property shall not constitute a representation (unless otherwise stated) as to its state or condition or that it is capable of fulfilling its intended function. Prospective purchasers/tenants should satisfy themselves as to the fitness of such items for their requirements.

Code of Practice for Commercial Leases in England and Wales

You should be aware that the Code of practice on commercial leases in England and Wales strongly recommends you seek professional advice from a qualified surveyor, solicitor or licenced conveyancer before agreeing or signing a business tenancy agreement. The Code is available through professional institutions and trade associations.

Money Laundering Regulations 2017

We are required by HMRC to conduct anti-money laundering checks on all parties with an interest in the property and accordingly we will require forms of identification in due course.

Misrepresentation Act 1967

This marketing brochure is for guidance only and does not form part of any offer or contract and must not be relied upon as statements or representations of fact.

Control of Asbestos Regulations 2012 (CAR 2012)

It is the responsibility of the owner or tenant of the property, and anyone else who has control over it and/or responsibility for maintaining it, to comply with the regulations. The detection of asbestos and asbestos-related compounds is beyond the scope of ASH Chartered Surveyors and accordingly, we recommend you obtain advice from a specialist source.

